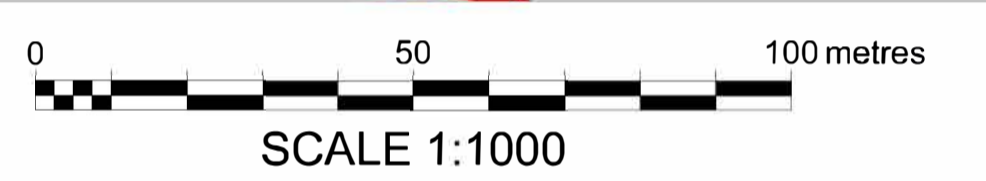
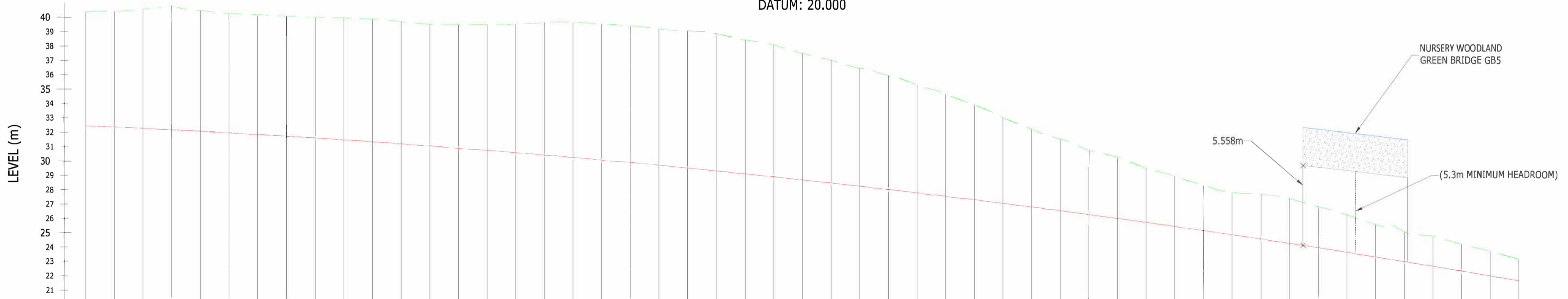


- Key:-**
- Red Line Boundary
 - Extents of Earthworks (cut)
 - Extents of Earthworks (fill)
 - Existing Ground Profile
 - Proposed Profile
 - Existing Watercourse

- Notes:**
1. Do not scale from this drawing.
 2. All dimensions are in metres unless otherwise stated.
 3. All spot elevations and contour levels indicated are in metres above Ordnance Datum (mAOD) unless otherwise indicated.
 4. This drawing is to be read with all other relevant drawings and reports.
 5. All works to be in accordance with the Specification for Highway Works.
 6. Please refer to 3.03.00 Environmental Statement Chapter 3: Description of Scheme for the Rochdale Envelope flexibility included within the design for the purposes of Environmental Impact Assessment
 7. This drawing is for planning application purposes only, it is not a construction issue drawing.



M-NWL-S-0002 - LONGSECTION
SCALE: H 1:1000, V 1:200.
DATUM: 20.000



CHAINAGE	EXISTING LEVELS	PROPOSED LEVELS	LEVEL DIFFERENCE
1430.000	40.345	32.438	-7.908
1420.000	40.402	32.351	-8.051
1410.000	40.561	32.259	-8.302
1400.000	40.791	32.161	-8.630
1390.000	40.456	32.059	-8.397
1380.000	40.266	31.951	-8.316
1370.000	40.170	31.837	-8.332
1360.000	40.078	31.719	-8.359
1350.000	39.993	31.595	-8.398
1340.000	39.956	31.466	-8.490
1330.000	39.872	31.332	-8.540
1320.000	39.695	31.193	-8.502
1310.000	39.501	31.048	-8.453
1300.000	39.484	30.898	-8.587
1290.000	39.489	30.743	-8.747
1280.000	39.513	30.582	-8.930
1270.000	39.635	30.416	-9.219
1260.000	39.646	30.245	-9.401
1250.000	39.505	30.069	-9.437
1240.000	39.419	29.887	-9.532
1230.000	39.200	29.700	-9.499
1220.000	39.041	29.508	-9.533
1210.000	38.866	29.311	-9.555
1200.000	38.405	29.108	-9.297
1190.000	38.073	28.900	-9.173
1180.000	37.486	28.687	-8.798
1170.000	37.011	28.469	-8.543
1160.000	36.444	28.245	-8.199
1150.000	35.929	28.016	-7.913
1140.000	35.284	27.782	-7.502
1130.000	34.641	27.542	-7.098
1120.000	33.901	27.298	-6.603
1110.000	32.991	27.048	-5.944
1100.000	32.197	26.792	-5.404
1090.000	31.524	26.532	-4.993
1080.000	30.735	26.266	-4.470
1070.000	30.249	25.995	-4.254
1060.000	29.488	25.718	-3.770
1050.000	28.939	25.437	-3.502
1040.000	28.292	25.150	-3.142
1030.000	27.802	24.858	-2.944
1020.000	27.671	24.560	-3.110
1010.000	27.379	24.258	-3.121
1000.000	26.823	23.950	-2.873
990.000	26.238	23.637	-2.601
980.000	25.560	23.318	-2.242
970.000	25.077	22.995	-2.082
960.000	24.756	22.666	-2.091
950.000	24.195	22.331	-1.864
940.000	23.696	21.992	-1.704
930.000	23.199	21.647	-1.552

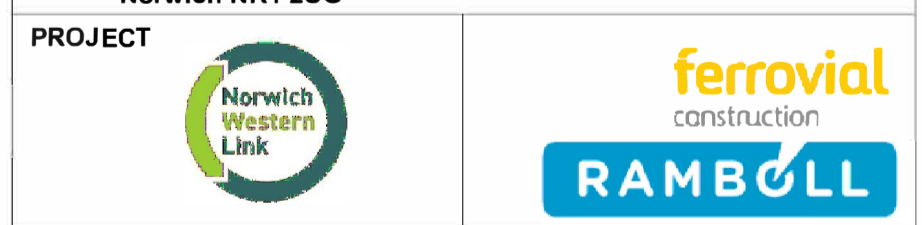
Mapping reproduced by permission of Ordnance Survey on behalf of HMSO.
© Crown copyright and database rights 2024 Ordnance Survey 100019340.

A1 - Authorised for Planning

C01	KAK	SA	SS	08/02/24
REVISION	DRAWN	CHECKED	APPROVED	DATE

CLIENT

Norfolk County Council
Grahame Bygrave
Interim Executive Director of Community and Environmental services
Norfolk County Council
County Hall, Martineau Lane
Norwich NR1 2SG



DRAWING TITLE

NORWICH WESTERN LINK
LONG SECTION
SHEET 7 OF 16

DRAWING STATUS

A1 - AUTHORISED FOR PLANNING

DRAWN	CHECKED	APPROVED	AUTHORISED
KAK	SA	SS	FQC

SCALE @ A1 SIZE	DATE	REVISION
1:1000	08/02/24	C01

DRAWING NUMBER

PK1002-RAM-HGN-MLE-DR-CH-2608